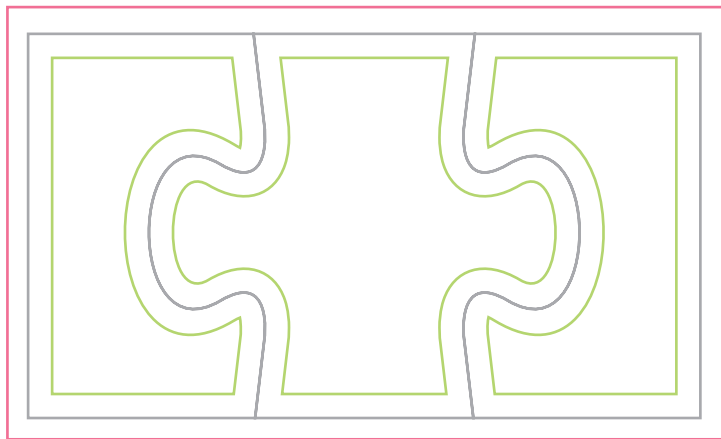


## Instructions For Template Set Up:

1. Art MUST fit within the margin and bleed parameters shown on template. See example below.

- **Green line\*** is inside margin. Leave 1/8 inch inside margin from the edges of the magnet on all sides for live art (all pertinent information must fit within the 1/8" inside margin).
- **Pink line\*** is bleed requirement. If you want the art to bleed (have imprint run off the edges of the magnet), give art an 1/8 inch outside margin on all sides.
- **Gray line\*** is where the magnet will be die cut for final production.

Note: Required margins/bleeds are 1/8" each. Art received without the 1/8" margin/bleed space will be adjusted for die cutting production.



3.5x2 3-Piece Puzzle Shaped Magnets